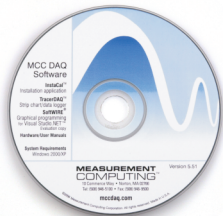


WIRELESS SETUP

MEASUREMENT COMPUTING

Here's what you need...



MCC DAQ Software CD



WLS-IFC



WLS-TC or WLS-TEMP



Power supply



USB cable



MCC Wireless DAQ SOLUTION



Load the "MCC DAQ Software" CD. Accept defaults, follow installation prompts.



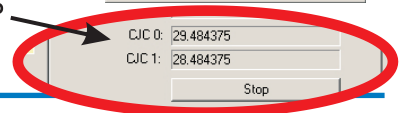
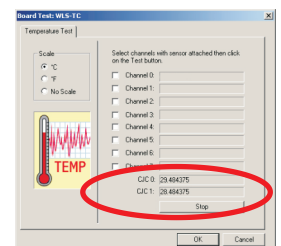
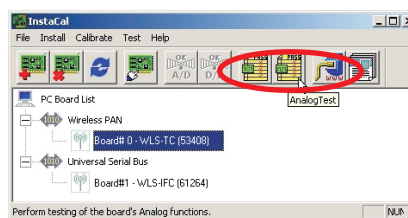
Plug the WLS-IFC into a USB port



Plug in power to WLS-TC or WLS-TEMP.



Launch *InstaCAL*. Select WLS PAN device, and click on the AnalogTest icon.



Success! You've got wireless temperature measurement!

QUESTIONS?

Call (508)946-5100
www.mccdaq.com