

Specifications

SSR-OAC-05A-11



**MEASUREMENT
COMPUTING™**

Document Revision 1.1, December, 2006
© Copyright 2006, Measurement Computing Corporation

Specifications

Typical for 25 °C unless otherwise specified.

General characteristics

Table 1. General characteristics

| Parameter | Conditions | Specification |
|-------------------|------------|------------------------------------|
| Type | | SPST normally open, random turn-on |
| Isolation voltage | | 4000 Vrms |

Output

Table 2. Load and line specifications

| Parameter | Conditions | Specification |
|-------------------------------|---|-------------------|
| Nominal line voltage | | 240 VAC |
| Load voltage range | | 24 to 280 VAC |
| Minimum peak blocking voltage | | 600 V |
| Maximum off-state leakage | 60 Hz | 4 mA rms |
| Load current range | | 0.03 to 3.5 A rms |
| Maximum surge current | One cycle | 80 A rms |
| Maximum surge current | 10 cycles (cannot be repeated until module temperature returns to steady state value) | 40 A rms |
| Maximum turn-on time | 60 Hz | 100 μ S |
| Maximum turn-off time | 60 Hz | 8.33 mS |
| Static dv/dt | | 3000 V/ μ s |

Input

Table 3. Input and logic circuit specifications

| Parameter | Conditions | Specification |
|-------------------------------|-------------------------|---------------|
| Nominal logic voltage | DC control | 5 VDC |
| Logic voltage range | | 2.5 to 10 VDC |
| Maximum logic supply current | Logic voltage = nominal | 16 mA |
| Nominal input resistance (Rx) | | 240 Ohms |
| Minimum drop out voltage | | 1 VDC |
| Maximum reverse logic voltage | | -5 VDC |

Environmental

Table 4. Environmental specifications

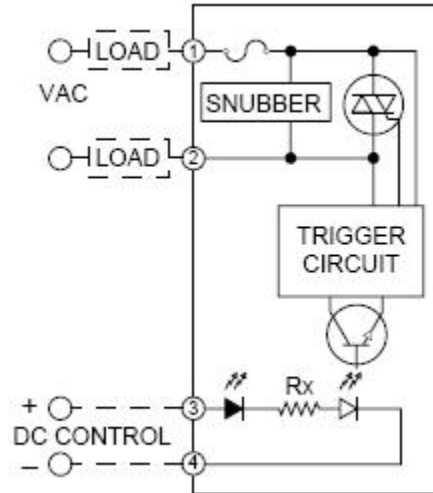
| | |
|-----------------------------|---------------|
| Operating temperature range | -40 to 100 °C |
| Storage temperature range | -40 to 125 °C |
| Mechanical shock | MIL-STD-202 |
| Vibration | MIL-STD-202 |

Mechanical

Table 5. Mechanical specifications

| | |
|------------|---|
| Dimensions | 1.7" (43.2 mm) L x 0.6" (15.2 mm) W x 1.25" (31.8 mm) H |
|------------|---|

Block diagram and pin out



Measurement Computing Corporation
10 Commerce Way
Suite 1008
Norton, Massachusetts 02766
(508) 946-5100
Fax: (508) 946-9500
E-mail: info@mccdag.com
www.mccdag.com