

Specifications

SSR-ODC-05R



**MEASUREMENT
COMPUTING™**

Document Revision 1.1, December, 2006
© Copyright 2006, Measurement Computing Corporation

Specifications

Typical for 25 °C unless otherwise specified.

General characteristics

Table 1. General characteristics

Parameter	Conditions	Specification
Type		SPST normally open, dry contact reed relay
Isolation voltage		1500 Vrms

Output

Table 2. Load and line specifications

Parameter	Conditions	Specification
Maximum line voltage		100 VDC, 120 VAC
Load voltage range		0 to 100 VDC, 0 to 120 VAC
Maximum contact rating		10 W
Maximum switching current		0.5 A
Maximum carry current		1 A
Minimum life expectancy	10 VDC, 10 mA	200 x 10 ⁶ cycles
	48 VDC, 100 mA	500 x 10 ³ cycles
	120 VAC, 80 mA	500 x 10 ³ cycles
Maximum contact resistance		250 mOhms
Maximum off-state leakage		0.002 mA
Maximum turn-on time	Including debounce	1 ms
Maximum turn-off time	Including debounce	1 ms

Input

Table 3. Input and logic circuit specifications

Parameter	Conditions	Specification
Nominal logic voltage	DC control	5 VDC
Logic voltage range		4.8 to 6 VDC
Maximum logic supply current	Logic voltage = nominal	10 mA
Nominal input resistance (Rx)		500 Ohms
Minimum drop out voltage		2.5 VDC
Maximum reverse logic voltage		-5 VDC

Environmental

Table 4. Environmental specifications

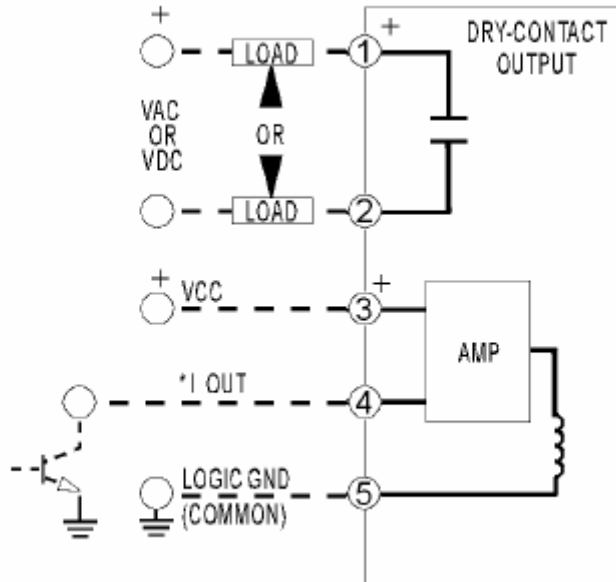
Operating temperature range	-20 to 85 °C
Storage temperature range	-40 to 125 °C
Mechanical shock	MIL-STD-202
Vibration	MIL-STD-202

Mechanical

Table 5. Mechanical specifications

Dimensions	1.7" (43.2 mm) L x 0.6" (15.2 mm) W x 1.25" (31.8 mm) H
------------	---

Block diagram and pin out



Measurement Computing Corporation
10 Commerce Way
Suite 1008
Norton, Massachusetts 02766
(508) 946-5100
Fax: (508) 946-9500
E-mail: info@mccdag.com
www.mccdag.com