

Specifications

SSR-OAC-05RLY



**MEASUREMENT
COMPUTING™**

Document Revision 1.1, December, 2006
© Copyright 2006, Measurement Computing Corporation

Specifications

Typical for 25 °C unless otherwise specified.

General characteristics

Table 1. General characteristics

| Parameter | Conditions | Specification |
|-------------------|------------|--|
| Type | | SPST normally open, dry contact reed relay |
| Isolation voltage | | 1500 Vrms |

Output

Table 2. Load and line specifications

| Parameter | Conditions | Specification |
|----------------------------|------------------------|------------------------------|
| Maximum line voltage | | 110 VDC, 250 VAC |
| Load voltage range | | 0 to 110 VDC, 0 to 250 VAC |
| Maximum contact rating | | 90 W |
| Maximum switching current | | 3 A |
| Maximum carry current | | 5 A |
| Minimum life expectancy | 30 VDC or 230 VAC, 3 A | 100 x 10 ⁶ cycles |
| Maximum contact resistance | | 250 mOhms |
| Maximum off-state leakage | | 0.002 mA |
| Maximum turn-on time | Including debounce | 11 ms |
| Maximum turn-off time | Including debounce | 11 ms |

Input

Table 3. Input and logic circuit specifications

| Parameter | Conditions | Specification |
|-------------------------------|-------------------------|---------------|
| Nominal logic voltage | DC control | 5 VDC |
| Logic voltage range | | 4.8 to 6 VDC |
| Maximum logic supply current | Logic voltage = nominal | 26 mA |
| Nominal input resistance (Rx) | | 200 Ohms |
| Minimum drop out voltage | | 4.8 VDC |
| Maximum reverse logic voltage | | -5 VDC |

Environmental

Table 4. Environmental specifications

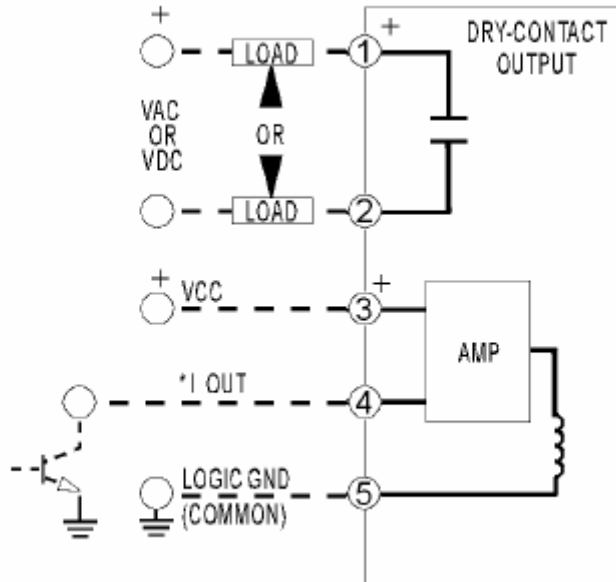
| | |
|-----------------------------|---------------|
| Operating temperature range | -20 to 85 °C |
| Storage temperature range | -40 to 125 °C |
| Mechanical shock | MIL-STD-202 |
| Vibration | MIL-STD-202 |

Mechanical

Table 5. Mechanical specifications

| | |
|------------|---|
| Dimensions | 1.7" (43.2 mm) L x 0.6" (15.2 mm) W x 1.25" (31.8 mm) H |
|------------|---|

Block diagram and pin out



Measurement Computing Corporation
10 Commerce Way
Suite 1008
Norton, Massachusetts 02766
(508) 946-5100
Fax: (508) 946-9500
E-mail: info@mccdag.com
www.mccdag.com