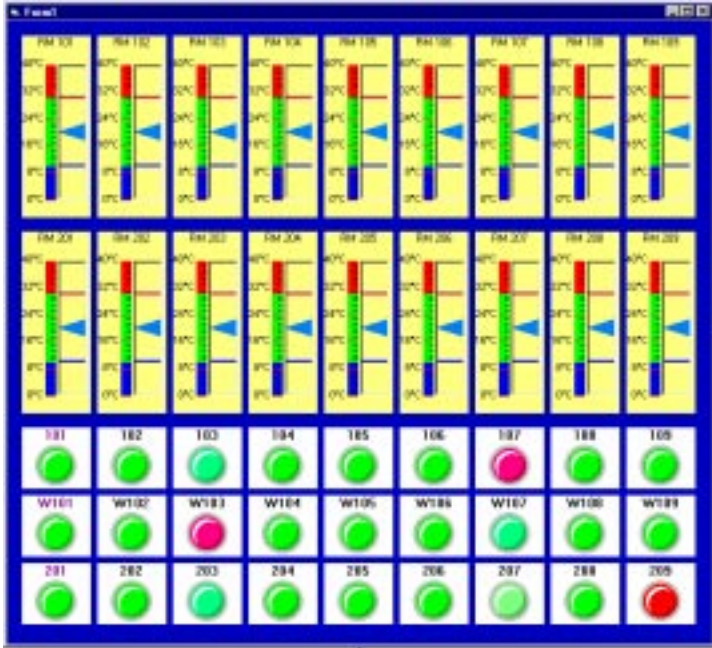


PlantView

Environmental Monitoring and Control Software Package for Large Industrial and Office Facilities



Features

- Extremely easy-to-use
- Provides simple, easy-to-read graphics including alarms
- Very low cost
- Expandable up to 256 temperature inputs, 1024 digital inputs and 512 digital outputs
- Compatible with ComputerBoards measurement products including:
 - CIO- and PCI-DAS-TC - thermocouple input board
 - CIO-DAS-TEMP - Semiconductor Temp Sensor Board
 - CB-COM series modules - Distributed I/O Module
 - CIO- and PCI-DIO series - Digital I/O boards
 - SSR-RACK series - Solid State I/O Module Racks
 - CIO-ERB series - Electromechanical Relay Boards
- Fully Y2K compliant
- For Windows 95, 98, NT or 3.x

Functional Description

PlantView is ComputerBoards new easy-to-use data acquisition, environmental monitoring and control package for industrial and large scale applications. The package is designed to monitor a variety of temperature inputs, provide and provides on-screen status of each of the inputs. The package allows you to set alarm conditions for each input. The alarms will be displayed visually, and alarm conditions may also be used to control digital outputs. The PlantView interface is identical to that of HomeView, though PlantView allows the creation of much larger systems. PlantView is fully compatible with systems created in HomeView, and allows you to upgrade as your system gets larger without requiring you to recreate your configuration.

The package also allows you to implement a simple “bang-bang” control system where the temperatures monitored may be used to turn on and off digital outputs. These outputs may be used to control heating and/or cooling units, as well as setting localized alarms and or status signals.

PlantView also allows you to monitor up to 1024 digital inputs. These may be used to monitor doors, windows or the condition of a wide variety of electronic and mechanical devices. The status of the inputs can be used to control digital outputs based on a variety of logic functions.

HomeView also has the capability to log all input information to disk for later analysis. The log files may be stored in

standard ASCII or Excel formats allows the data to be easily printed out, or transferred into your program of choice. The package is based on ComputerBoards powerful VIX Components™ and Universal Library™ packages and has been written in Visual Basic®. The package includes the complete, easy to use run-time operating software. However, the complete Visual Basic source code as well as VIX Components and the Universal Library are available. This allows users to add functions and capabilities to an application without requiring the abandonment of previously developed systems. The software is licensed for a single use, though an unlimited run-time license is also available.

HomeView is compatible with a wide assortment of ComputerBoards’ temperature monitoring hardware including the CIO- and PCI-DAS-TC and the CIO-DAS-TEMP. The software is also compatible with the temperature input modules in the CB-COM distributed I/O family. HomeView is also compatible with ComputerBoards’ wide assortment of digital I/O boards for ISA, PCI, and PC/104 computers. These boards are all supported by a large selection of digital signal conditioning boards including the SSR-series of solid state I/O module racks and the CIO-ERB series of electromechanical relay boards.

HomeView is fully compatible with the Windows 95, 98 and NT operating systems and is also Y2K compatible.