

NI LabVIEW® Support

Driver Support Enhancements



Features

- Tiered, modular VI design
- Clean, easy-to-understand block diagrams
- Easy-to-understand VI front panels
- Easy device substitution
- Numerous example VI's
- New import capability from DaqView and DaqExplorer
- Support included with all DaqBook, DaqScan, DaqLab, DaqBoard, Personal Daq, WaveBook, and StrainBook
- Supported Operating Systems: Windows 7/Vista/XP SP2, 32-bit or 64-bit

Modular VI Design

Support is organized in a tiered modular architecture allowing improved VI customization and rapid device integration capabilities. High-level VIs allow more complicated device configurations to be abstracted to their simplest elements while lower-level VI's provide powerful configuration features.

Block Diagrams and Front Panels

Block diagrams have consistent wiring conventions which greatly increase the ability to adapt VI's to specific application needs. Diagrams are well annotated to minimize application design effort. Clean, easy to understand front panels allow end users to quickly configure channel and acquisition settings.

Device Substitution

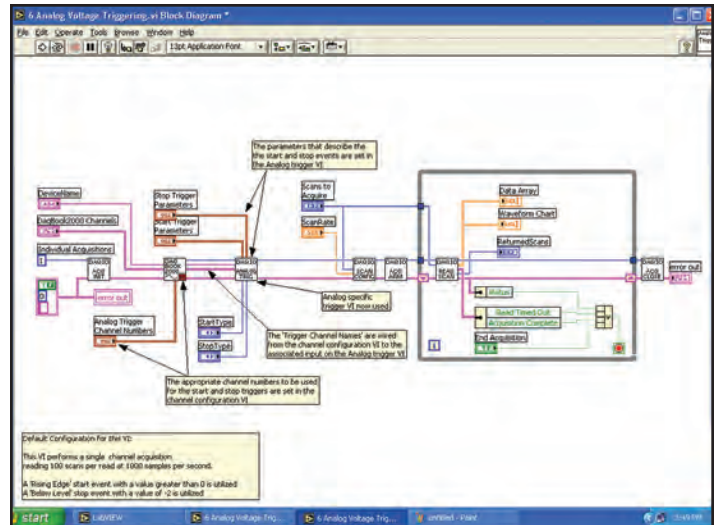
Modular architecture allows easy substitution of any IOtech data acquisition products and expansion modules with minimal effort. Typically, all that is required is that existing node connections are deleted and reconnected to new device node.

Configuration Import

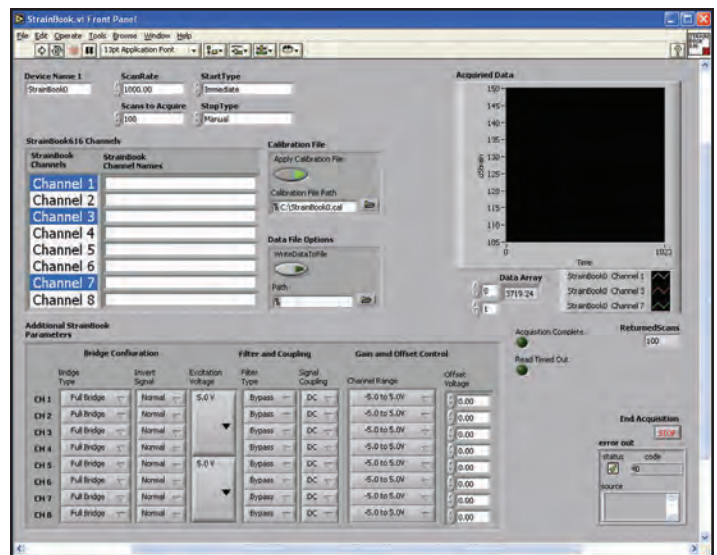
Import feature allows the application developer to import configurations generated by DaqExplorer or any DaqCOM-based application allowing extremely complex configurations to be imported with little or no programming required.

Numerous Example VI's

Numerous example VI's are provided which demonstrate various configuration, expansion, and triggering techniques, as well as multiple device configurations including Master/Slave device configurations.



Block diagrams are well designed with clean, easy-to-understand wiring connections and annotations throughout



VI front panels are clean and well designed for easy user configuration and operation