

IQ-PCIK

PC Interface Kit for IQ-Data Logger



Description

To interface IQ data loggers to your computer, you will need an IQ-PCIK, PC Interface Kit (sold separately from the IQ Loggers). The kit includes an IQ-COM serial cable/adaptor and IQ-Wizard software. (IQ-Wizard requires Windows 95/98/NT and Excel 97.)

To start, simply launch Excel, start the IQ Wizard add-in and connect the logger to a serial port on your PC using the special IQ-COM cable/adaptor that comes with the kit. Then, using IQ-Wizard, it's very easy to configure your loggers with the desired sample rate, thresholds, start method, etc. Finally, unplug the logger, place it where desired, and start recording data. If desired, you can configured an IQ Logger to start recording data at once, when the logger button is pressed, or at specified time/date (each logger has a built-in clock).

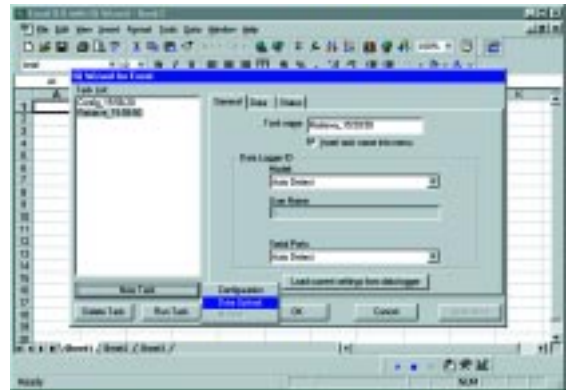


Data logger setup using IQ Wizard is easy. Check the boxes for the samples you'd like to take, select the start method and sample rate, and click OK. Your IQ Logger's ready to go!

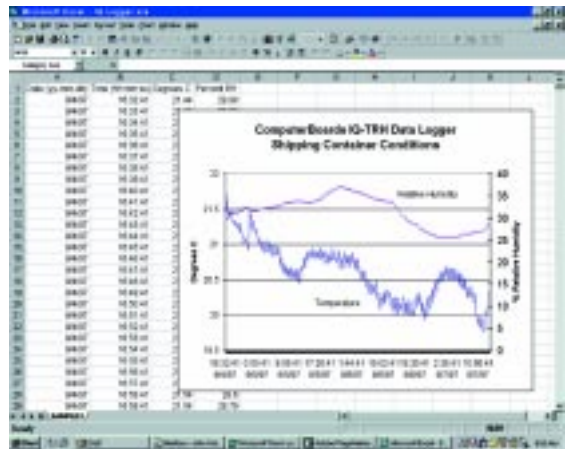
Data retrieval is simple with built-in dialog boxes, allowing you to download your logged data into cells in your worksheet. After the recording session is over, retrieve the logger and reconnect it to the PC. IQ-Wizard will handle details such as engineering unit conversion and time-stamping the data. Excel can perform such tasks as X-Y data plotting or other more complex data processing functions after the data is unloaded. Once the data is downloaded, you're ready relaunch the logger on the same task or select a new one.

Features

- Includes IQ-Wizard software and PC interface cable/ adapter.
- Place data directly into Excel spreadsheets
- Only one kit is required for multiple data loggers.
- Easy to use
- Engineering unit conversion and time-stamping is done automatically on data retrieval.
- IQ-Wizard software is task-oriented for fast, accurate configuration and efficient data retrieval.
- All tasks are stored for easy repetition.



Downloading the data from the logger is as simple as selecting what cells you'd like to receive the date. To simplify things further, you can even save download configurations (as shown above).



With your data automatically placed into cells in your Excel worksheet, you're ready to take advantage of the powerful display and analysis tools built into Excel.

PC Interface Kit Ordering

IQ-PCIK
IQ-COM

IQ Family PC Interface Kit
Spare/additional PC interface cable assembly